

Perla



Cat Cave

SKU:

G02-010-01, G02-010-01

Description:

Cats are officially social creatures, however, they are also famous for their love of respite and sleep. Designed exclusively for MiaCara by Belgian designer Mathias De Ferm, the Perla Cat Cave is a protected space for your cat to rest, and a contemporary object for your home.

The curved teardrop shape of the handcrafted cat basket gives your cat a sense of security for a relaxing nap. Despite its protected shape, the Perla Cat Cave is braided with a solid, lightfast rope or natural rattan, so your cat can still enjoy a 360° view of its surrounding.

The rope braids are composed of special high-quality yarn that maintains a high UV lightfastness and resistance to stains and bacteria, making it suitable for both indoor and outdoor. The cushion is made out of special high-resilience foam and provides a superior comfort level.

The bed is also very easy to care for with both the cushion and cover being machine washable.

Design: Mathias De Ferm

Sizes, Dimensions & RRP:

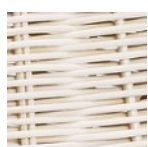
55,6 x 55,6 cm (W x H), ca. 4-5 kg,

Diameter of opening: 18 cm

MSRP: 299,- Euro Rattan / 349,- Euro Rope

Available Colors:

- Natural
- Anthracite



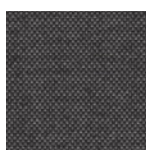
Natural



Anthracite



Cream



Anthracite

Material:

- Body: Natural Rattan, Polypropylen Rope
- Foam Filling: 100% Polyurethan
- Cover fabric: 100% Polyester Trevira CS

Frame:

If necessary, clean the frame by wiping it with a soft damp cloth. Polypropylen rope can be cleaned with water.

Inlett: 60° C gentle wash cycle



The cushion filling is made of extremely soft, open cell foam. To maintain the excellent properties of this material in the long run, the cushion should be cleaned accordingly.

The best cleaning procedure for the inner cushion is to wash it with a commercially available mild detergents at temperatures up to 60° C. It is not recommended to use highly chlorinated and chemically aggressive washing additives. A brownish discoloration of the foam can not be avoided, but has no effect on the quality of the foam. After washing and rinsing please remove as much water as possible through the spin cycle. The inner cushion can be best dried by air on a rack. It can also be tumble dried at 60° C, but please avoid over-drying.

Please plump up the inner cushion regularly so that it retains its fluffiness and shape.

Cover Fabric: 60° C



The cover is machine washable at 60° C or can be dry cleaned. After washing, please let the cover air dry on a rack, and do not put it in the dryer. If needed, iron the fabric only at the lowest level (synthetic).

The fabric is easy to clean and very durable. Please brush off dirt and dust regularly, before it can penetrate deeper into the fabric, and remove stains immediately. For simple and uncomplicated cleaning in between, simply vacuum the surface of the cover with an upholstery brush.

Care Instructions:

Product Information - March 2020