

---

*Alumina Pendants*



## *Alumina Pendant*

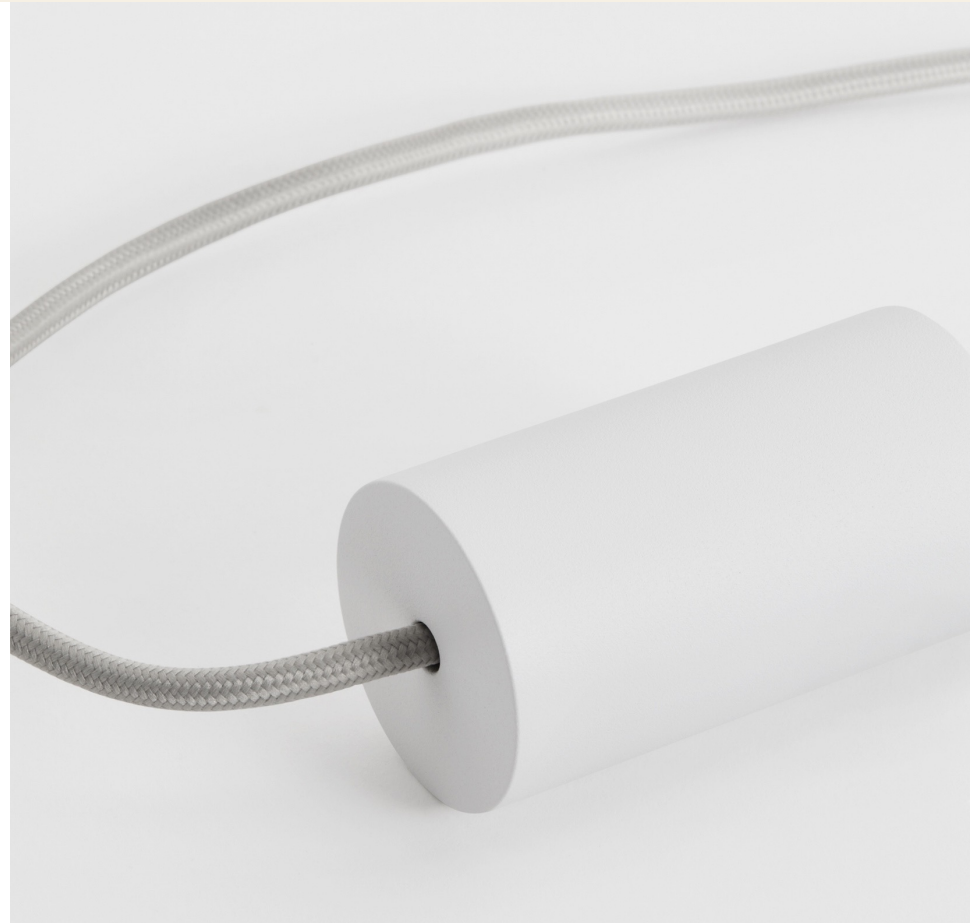
tala.

Shaped from a solid cylinder of aluminium, the bold form is balanced by the modest, chalk-white finish, enabling it to be displayed in minimal spaces or with striking colour schemes.

Designed with a concealed neck, the Sphere V LED bulb sits almost flush in the pendant, while the speckled grey and white braided cord unites the pendant with the similarly textured ceiling rose or canopy.

### *Family list:*

- Alumina Single Pendant
- Alumina Triple Pendant
- Alumina Nine Pendant



*“We combined a soft chalky texture with clean geometry to highlight the delicate relationship between bulb and pendant.”*

*- Daniel Carpenter, Senior Designer*



An extension of the Alumina Lamp series released in November 2020, the Alumina Pendants celebrate the theories and concepts of Bauhaus, drawing inspiration from the White City in Tel Aviv.

For the pendant edition, the five colourways of the Lamp series were narrowed down to the popular and versatile 'Chalk' finish, referencing most closely the classic curved design and white surface finish of the architecture.

Designed to showcase the form of the new Sphere V bulb and its in-built Dim to Warm technology, the series returns to the simple, purposeful forms of Bauhaus.



The lightweight cast aluminium body is ideal for creating the balanced form suitable for powder coating, this time finished in the subtle Chalk white.

Complimented by the grey and white speckled braided cord, the colourway brings a lightness to the suspended floating orbs.

Aluminium also has excellent recyclability potential and is one of earth's most abundant metals.



## *Alumina Single Pendant with Sphere V*

tala.

The Alumina Single Pendant is a statement fixture to elevate the equally bold Sphere V LED bulb.

Shaped from a solid cylinder of aluminium, the bold form is balanced by the textured, dusky-white Chalk finish, making it ideal for a variety of interiors, working beautifully in minimal spaces or with striking colour schemes.

### *Key features*

- Built from lightweight aluminium
- Textured chalk white powder-coat finish
- Concealed neck on pendant
- Ceiling rose size 81mm (Ø) x 26mm (h)
- 3m of grey and white speckled braided cord
- Also available as a standalone fixture







## *Alumina Triple Pendant with Sphere V*

The Alumina Triple Pendant is a stylish and minimal lighting system designed for a variety of interior settings.

A trio of Alumina Pendants are housed in a circular ceiling canopy that mirrors the textured, dusky-white Chalk finish of the pendants, while the concealed neck creates a subtle harmony between the Sphere V bulbs and fixture.

### *Key features*

- Circular ceiling canopy
- Built from lightweight aluminium
- Textured chalk white powder-coat finish
- Concealed neck on pendant
- Canopy size 250mm (Ø) x 20mm (h)
- 3 m of grey and white speckled braided cord per pendant
- Also available as a standalone fixture









## *Alumina Nine Pendant with Sphere V*

tala.

This impressive lighting system combines the Alumina Nine Pendant fixture with nine mouth-blown Sphere V bulbs to transform interior spaces with a cascade of light.

Framed in a large circular canopy that mirrors the textured, dusky-white Chalk finish of the pendants, the concealed neck on the pendants create a subtle harmony between the Sphere V bulbs and fixture.

### *Key features*

- Large circular ceiling canopy
- Built from lightweight aluminium
- Textured chalk white powder-coat finish
- Concealed neck on pendant
- Canopy size 508mm (∅) x 50mm (h)
- 5 m of grey and white speckled braided cord
- Simple installation
- Also available as a standalone fixture











A welcome addition to our canopy collection, providing a neutral colourway solution that suit a range of interiors.



---

*Thank you*