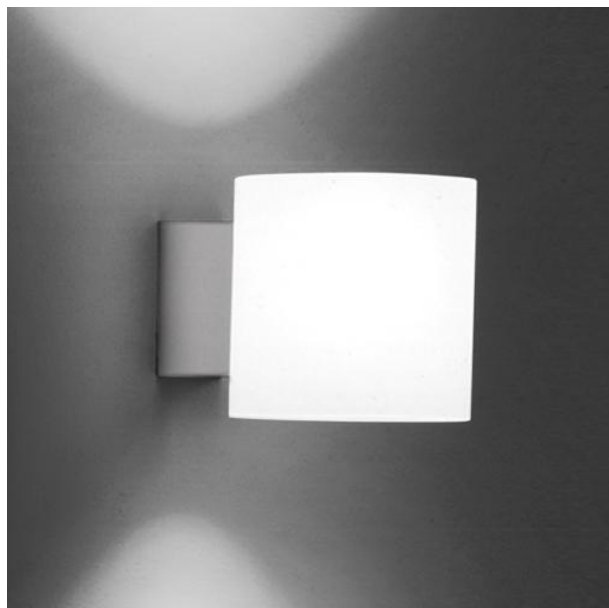


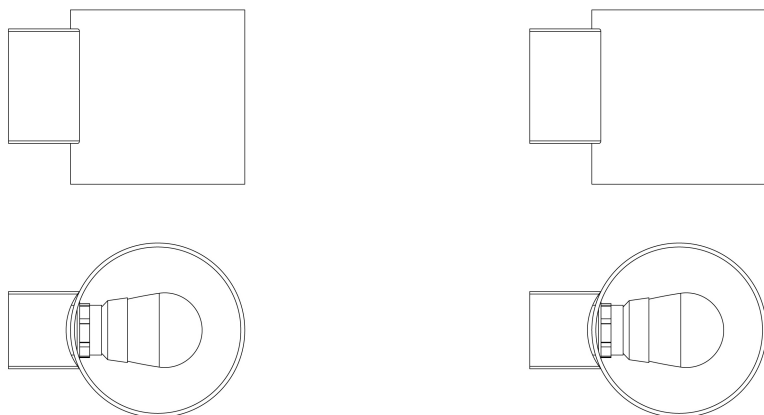
**TUBE/V**  
code: **1261/V/BI**




DESIGN **ELIO MARTINELLI** 1996



WALL LAMP FOR DIFFUSED LIGHTING, BASE RESIN IN WHITE COLOR, DIFFUSER IN BLOWN GLASS.

## TECHNICAL DRAWINGS

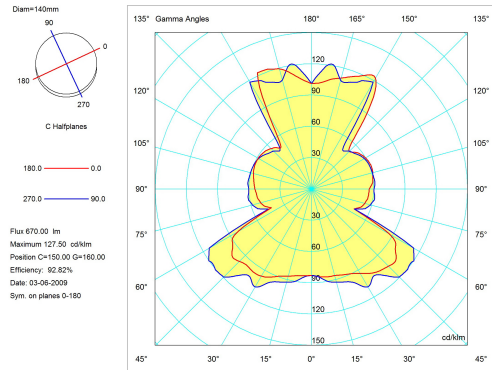


<b>UTILIZATION:</b>	<b>INTERNAL</b>	<b>TIPOLOGY:</b>	<b>WALL LAMPS</b>	
<b>COLOURS</b>	STRUCTURE: DIFFUSER:	<b>WHITE</b> <b>WHITE</b>		
<b>MATERIALS</b>	STRUCTURE: DIFFUSER:	<b>RESIN</b> <b>SATIN GLASS</b>		
<b>MEASURES</b>	WIDTH: - HEIGHT: <b>14 cm</b> LENGTH: - DEPTH: <b>20 cm</b>	DIAMETER: <b>14 cm</b> HOLE DIAMETER: - HOLE DEPTH: -	WEIGHT NET: <b>1</b> GROSS: <b>2</b>	
	PACKAGING VOL.M <sup>3</sup> : <b>20X27X20</b>		NUMBER OF ITEMS: <b>1</b>	
<b>BULBS</b>	LED 1X12W E27 FLUX: - KELVIN: - CLASS: A+ CRI: - COLOR TOLERANCE: - DURATION: -			
				
<b>DEVICE SPECIFICATIONS</b>	TYPE OF EMISSION: <b>DIFFUSED</b> POWER: <b>12 W</b> FLOW LAMP: <b>621 lm</b> BEAM ANGLE: - DEVICE EFFICIENCY: <b>51.8lm/W</b> IMPACT RESISTANCE: - GLOW WIRE TEST: -		POWER SUPPLY CABLE LENGTH: - LENGTH OF HANGING CABLE: - SUPPLY: - POWER SUPPLY ASSEMBLY: - TYPE OF DIMMING: - VOLTAGE: <b>230 V</b>	
	POWER SUPPLY: -			
<b>CERTIFICATIONS</b>				
<b>MARKETS</b>	THIS ITEM IS AVAILABLE IN THE FOLLOWING COUNTRIES: <b>EUROPE</b>			

**TUBE/V**  
**code: 1261/V/BI**

DESIGN **ELIO MARTINELLI** 1996

## TECHNICAL DRAWINGS



## PHOTO GALLERY

