

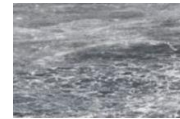
## Moon Table // Round Coffee Table Ø60x45

Designed by SPACE

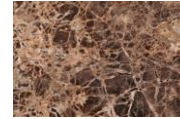
### PRODUCT



// Bron/black stained oak



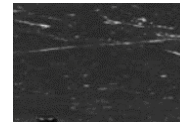
// Grey marble



// Brown marble



// White marble



// Black marble

### DESCRIPTION

Space Copenhagen is the designer behind the classic Moon Collection; a series of organic rounded tables for both domestic and public spaces. The interplay between the beautiful solid oak table top and the smooth half – or full moon shaped base, with bevelled surface, creates a simple yet strong identity for the design. The result is an elegant table series with clear references to traditional Danish carpentry.

Through their fascination of the contrast between variations of surfaces and finishes, Space Copenhagen has designed their first table collection for GUBI. The collection spans from small and low round lounge tables in four sizes to three large and generous dining tables.

#### Table

The table collection consist of round and oval coffee and dining tables. The table is available with matt oil finish or high gloss varnish. The matt oil finish table is blockboard oak that is black stained and oiled. The high gloss varnish has veneered table top.

### VERSION

Matt oil finish  
High gloss varnish

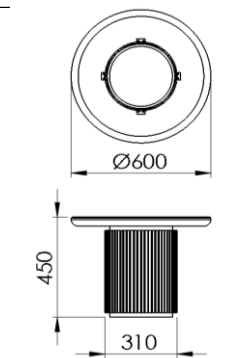
### TYPES

Order item - look for part number in the pricelist.  
The series consists of the following:

Dinnig Table // H: 73 cm / Table top sizes: 300x105, 260x105, Ø120, Ø150  
Coffee Table // H: 45 cm // Table top sizes: 140x70, Ø120, Ø150, Ø60  
Lounge Table // H: 55 cm // Table top size: Ø60



### MEASUREMENTS



### FACTS

#### MEASUREMENT - H X L X W: MM

Height: 450 mm  
Table top: Ø 600 mm  
Table top thickness: 40 mm

WEIGHT ITEM (wood top) 17 kg      WEIGHT ITEM (marble top) 40 kg

PACKAGING TYPE  
Cardboard, MDF, Wood frame

PACKAGING MEASUREMENT - L x W x H CM  
70 x 70 x 82 cm

#### WEIGHT PACKAGING - MATERIAL TYPE

- Delivery note
- Cardboard box
- MDF frame
- Wood frame
- Europallet
- LD-EPE foam protector
- Strapping

WEIGHT TOTAL (wood top) 27 kg      WEIGHT TOTAL (marble top) 65 kg

NUMBER OF PARCELS  
2 psc.

## Moon Table // Round Coffee Table Ø60x45

---

Designed by SPACE

### CLEANING AND MAINTENANCE

---

For dusting and light cleaning of the woodensurface use a soft, dry cloth.

For further cleaning, use a soft cloth that is firmly wrung in clean water for gently wiping the surface, and then immediately use a dry cloth to wipe the surface again.

Do not use materials for maintenance that:

- Contain abrasive agents.
- Are basic, acidiferous or organic.

For the best maintenance of the product, protect it against sunlight and heat, and try to keep it away from moisture, grease and other dirt.

Furthermore, protect the surfaces against sharp objects and other that might scratch.

Marble cleaning and maintenance - see seperate marble care instructions

### ENVIRONMENT

---

Parts can be separated and sorted for recycling.

### TESTS

---

-

### CERTIFICATION AND LABELS

---

-