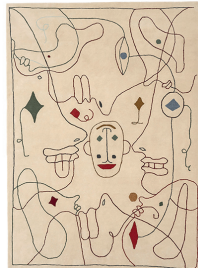


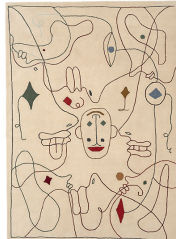
nanimarquina

Silhouette Tufting

Design by Jaime Hayon



200x300



170x240



Wet cleaning
Limpieza en húmedo



Dry cleaning not recommended
Lavado en seco no recomendado

Fiber. 100% New Zealand wool
Technique. Hand tufted
Density. 56,000 knots/m²
Wool pile height. 14 mm
Total height. 20 mm
Weight. 4.50 kg/m²

Fibra. 100% Lana de Nueva Zelanda
Técnica. Hand tufted
Densidad. 56.000 nudos/m²
Altura pelo. 14 mm
Altura total. 20 mm
Peso. 4,50 kg/m²



Special sizes available.
Ask for terms and conditions of delivery.

Disponible en medidas especiales.
Consultar condiciones y plazos de entrega.




















This rug meets the ASTM E648 and CFR 16 PART 1630/1631 reaction to fire standards requirements for floors. This rug meets the CAL PROP 65 ensuring that is free of harmful substances. To meet ADA regulation, the design can be adapted to the correct pass of wheelchairs by reducing the rug pile height (PH 5/7 mm – TH 12 mm).

nanimarquina

TECHNICAL CERTIFICATIONS
CERTIFICACIONES TÉCNICAS

TECHNICAL CERTIFICATIONS

CERTIFICACIONES TÉCNICAS

Reaction to fire <i>Reacción al fuego</i>	UNE-EN 13501-1:2019		Contract use. Good fire behaviour. Low smoke density. <i>Uso contractual. Buen comportamiento al fuego. Baja densidad de humo.</i>
			Contract use. Medium fire behaviour. Low smoke density. <i>Uso contractual. Comportamiento al fuego medio. Baja densidad de humo.</i>
			Contract use. Low fire behaviour. <i>Comportamiento al fuego menor. Baja densidad de humo.</i>
	ASTM E648		Radiant heat resistance. <i>Resistencia calor radiante.</i>
	CFR 16 PART 1630/1631		Surface flammability. <i>Flamabilidad de la superficie.</i>
Durability <i>Durabilidad</i>	Domestic use <i>Uso doméstico</i>		Intensive use <i>Uso intensivo</i>
	EN ISO 10361 Method A		Medium use <i>Uso medio</i>
			Occasional use <i>Uso ocasional</i>
	Comercial use <i>Uso comercial</i>		Heavy traffic <i>Tráfico intenso</i>
	EN ISO 10361 Method A		Medium traffic <i>Tráfico medio</i>
			Occasional traffic <i>Tráfico ocasional</i>
Luxury class <i>Lujo y confort</i>	EN ISO 8543		LC5 (highest luxury rating) <i>LC5 (índice de calificación más alto en función del gramaje)</i>
Castor chairs allowed <i>Apta para sillas con ruedas</i>	EN 985:2002 Method A		Continuous use (office etc.) <i>Uso continuo (oficina, etc)</i>
			Occasional use (private) <i>Uso ocasional (privado)</i>
Suitable for stairs <i>Apta para escaleras</i>	EN ISO 12951-B		Continuous use <i>Uso continuo</i>
			Occasional use <i>Uso ocasional</i>
Color fastness <i>Resistencia del color</i>	Light resistance <i>Resistencia a la luz</i> EN ISO 105-B02		UV resistant and higher preservation of colors. <i>Resistente a rayos UV y mayor conservación de los colores.</i>
	Water resistance <i>Resistencia al agua</i> EN ISO 105-E02		Excellent <i>Excelente</i>
Thermal conductivity <i>Resistencia térmica</i>	EN 12664:2001		Rug thermal resistance is lower than 0.17 m ² K/W. The symbol indicates that the rug can be used in combination with underfloor heating systems. <i>La resistencia térmica de la alfombra es inferior a 0,17 m² K/W. El símbolo indica que la alfombra es apta para usar con sistemas de calefacción por suelo radiante.</i>
Free of harmful substances <i>Libre de sustancias nocivas</i>	CAL PROP 65		Ensuring that the product does not contain chemical substances. <i>Asegurando que el producto no contiene sustancias químicas.</i>

INDOOR RUGS		Surface flammability <i>Flamabilidad superficie</i>			Durability <i>Durabilidad</i>		Luxury class <i>Lujo y confort</i>	Thermal conductivity <i>Resistencia térmica</i>	Castor chairs allowed <i>Apta para sillas con ruedas</i>	Suitable for stairs <i>Apta para escaleras</i>	Free of harmful substances <i>Libre de sustancias nocivas</i>
		Reaction to fire <i>Reacción al fuego</i>	CFR 16 PART 1630/1631	ASTM E648	Domestic use <i>Uso doméstico</i>	Comercial use <i>Uso comercial</i>					
ALFOMBRAS DE INTERIOR											
FORMULA	HAND TUFTED 100% New Zealand wool		Pass	Class 1							Pass
	HAND TUFTED 100% New wool		Pass	Class 1							Pass
	HAND TUFTED 75% New wool + 25% Tencel		Pass	Class 1							Pass
	HAND KNOTTED Type Indo Nepal 100% New Zealand wool		Pass	Class 1							Pass
FORMULA	HAND KNOTTED Type Indo Nepal 100% Jute		Pass	Class 2							Pass
	HAND KNOTTED Type Sumak 100% Afghan wool		Pass	Class 2							Pass
FORMULA	HAND LOOMED 75% New wool + 25% Tencel		Pass	Class 1							Pass
FORMULA	HAND LOOMED Type Kilim 100% Hand spun Afghan wool		Pass	Class 1							Pass
FORMULA	HAND LOOMED Type Dhurrie 49% New Zealand wool + 45% Wool felt + 6% Cotton		Pass	Class 1							Pass
	HAND LOOMED Type Dhurrie 100% New Zealand wool		Pass	Class 1							Pass
	HAND LOOMED Type Dhurrie 100% New wool		Pass	Class 1							Pass

OUTDOOR RUGS		Surface flammability <i>Flamabilidad superficie</i>			Durability <i>Durabilidad</i>		Luxury class <i>Lujo y confort</i>	Color fastness <i>Resistencia del color</i>		Free of harmful substances <i>Libre de sustancias nocivas</i>
		Reaction to fire <i>Reacción al fuego</i>	CFR 16 PART 1630/1631	ASTM E648	Domestic use <i>Uso doméstico</i>	Comercial use <i>Uso comercial</i>		Light Luz	Water Agua	
ALFOMBRAS DE EXTERIOR										
FORMULA	HAND TUFTED 100% Recycled PET		Pass	Class 2						Pass
FORMULA	HAND LOOMED Type Dhurrie 100% Recycled PET		Pass	Class 1						Pass
FORMULA	HAND LOOMED 100% Recycled PET		Pass	Class 2						Pass

* To improve the reaction to fire qualification we can apply the fireproof treatment achieving the maximum rating (B) according to UNE-EN 13501-1:2019

* Para mejorar la resistencia al fuego, podemos aplicar el tratamiento ignífugo obteniendo la categoría máxima (B) según normativa UNE-EN 13501-1:2019

Care and Cleaning / Conservación y limpieza

Instructions / Consejos



1 Vacuum your rug regularly.
Recomendamos pasar el aspirador frecuentemente.



2 Clean spills correctly before they dry.
Limpiar las posibles manchas con la solución adecuada antes de que se sequen.



3 When necessary, take your rug to a specialist dry-cleaner.
Recomendamos llevar la alfombra en tintorerías especializadas, en caso que sea necesario.

Stains / Manchas	What to use / Qué usar	How/ Cómo
<p>Coffee / Café Tea / Té Milk / Leche Chocolate / Chocolate Wine / Vino Blood / Sangre Urine / Excrements / Orina / Excrementos</p>	<p>Dilution of detergent / Disolución de detergente + Vinegar / Vinagre + Warm water / Agua tibia</p>	<p>First vacuum and then apply the dilution with a damp sponge. Afterwards, carefully rub with a clean cloth and leave to dry. cloth and allow drying. Pasará primero el aspirador y aplicará la dilución con una esponja húmeda. Limpiar luego con un trapo limpio y dejar secar.</p>
<p>Grease / Grasas Wax / Cera Ink / Tinta</p>	<p>Solvent (Perchloroethylene) / Disolvente (Perclorotileno)</p>	<p>Test colour resistance first on a corner, then apply the solvent with a clean white cloth directly on the stain. Comprobar primero en una esquina la resistencia del color y aplicar con un trapo blanco limpio directamente sobre la mancha.</p>
<p>Mud / Barro General dirt / Suciedad en general</p>	<p>Ammonia / Amoníaco + Warm water / Agua tibia</p>	<p>Leave the stain to dry and then brush. Finally apply the dilution with a damp sponge. Afterwards, rub carefully with a clean cloth and leave to dry. Dejar secar, cepillar y aplicar la dilución con una esponja húmeda. Limpiar luego con un trapo limpio y dejar secar.</p>



Can be dry-cleaned
Se puede lavar en seco

Fibre 100% Wool
Fibra 100% Lana

MADE IN PAKISTAN

Nani Marquina SL
NIF B58468521

Head Office
Església 10, 3er D
T + 34 932 376 465
F + 34 932 175 774
08024 Barcelona (Spain)
info@nanimarquina.com
www.nanimarquina.com